

TvWishList Version 1.2.1.3

Description

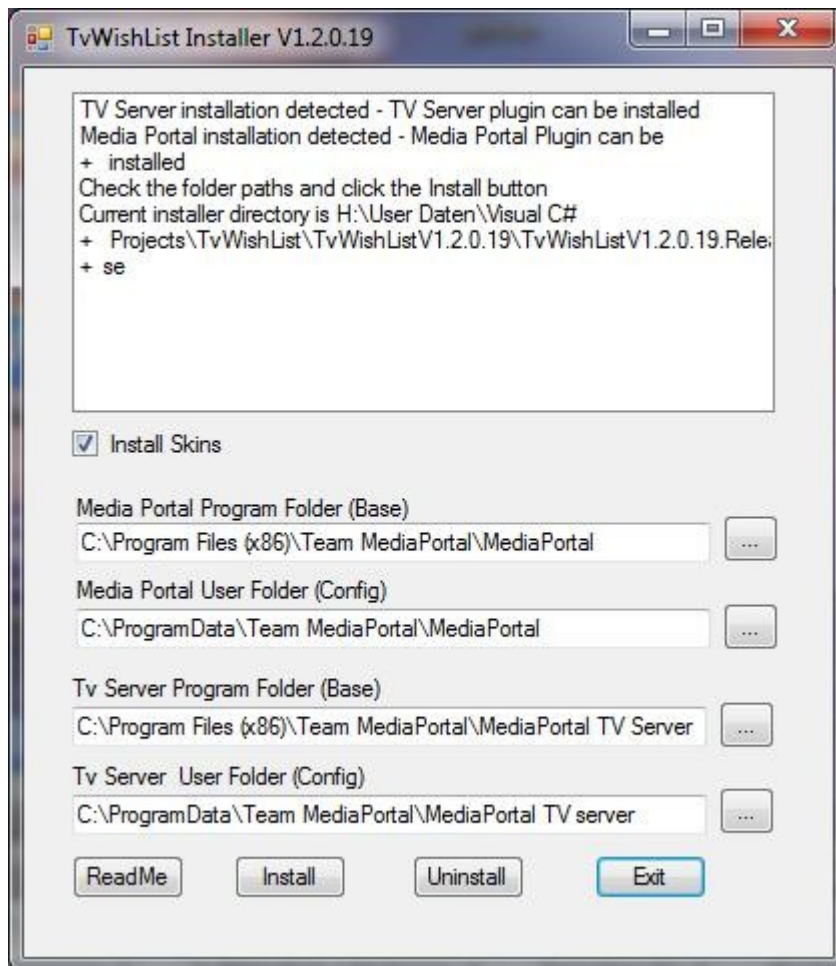
- Never again miss your favourite movie when it is showing up on TV.
- Create a list of movies or episodes you want to record or get a reminder and then stay patient.
- TvWishList will search your Epg data and compare to your search list. If the plugin finds a match it will record and/or send you an email.
- TvWishList will only record one show if it is repeated at multiple times.
- TvWishlist is using the Tv server conflict management
- You can choose partial or exact match for program titles or search the program description.
- Use SQL expressions to search your movies
- Input your TvWishList daat with the new MediaPortal plugin
- Use the MediaPortal in a View Mode as your personal TV guide to search for your favorite episodes, genres, star rating, ...

Requirements

- TV Server 1.0.1 or 1.0.2 or 1.1.0 or 1.1.1 or 1.2.x
- The plugin has been tested with Windows XP SP3, Windows Vista SP2 32bit and Windows 7 64bit.

Install and Enable the Plugin

- Start the MediaPortal Extension Installer (MPEI) which can be found in your MediaPortal program directory and search for „TvWishList“. Click „Install“ and the TvWishList installer will be started.
- Click next and the TvWishList Installer window will open after you have accepted the license. Check/Uncheck the checkbox if you want to install / not to install the skin files for the MediaPortal plugin.
- Click the buttons “Readme”, “Install” and “Exit”. Enable the plugin in the TV server configuration. You will be asked if you want to install the Tv server plugin and MediaPortal plugin
- In a single seat MediaPortal installation you can install both the TvServer and the MediaPortal plugin. The installer will detect if you can only install the Tvserver plugin for a Tvserver without a client or the MediaPortal plugin for a client without a server.
- During installation or during import you can get a security message for running programs downloaded from the internet twice. You need to confirm to run and uncheck the “ask always” checkbox.
- You can delete all TvWishList files by the Uninstall button.
- After the installation you must first configure your TvServer plugin „TvWishList“and then your MediaPortal plugin „TvWishListMP“.



Quick Usage Guide for the TV Server Plugin (TvWishList)

Enter the title of the movie you want to record in the "Search For" textbox and activate the checkbox at the beginning of the line. If you want to receive an Email message you need to fill in the server information on the "Settings" tab. The default settings of the other options can be used for most of the users.

Quick Usage Guide for the MediaPortal Plugin (TvWishListMP)

After you have configured the plugin in the MediaPortal configuration you have to check the correct path to the Tvserver TvWishList folder. Then open the MediaPortal plugin and click the „New“ button to add a new wish. When done click the „Search EPG“ button and view the results with the button “View results”.

A) Detailed Usage Guide for the Tv Server Plugin (TvWishList)

The configuration consists of four tabs „Main“, „Email“, „Settings“ and „Formats“. In the „Main“ tab you specify your search list which contains the movies and settings you want to apply to your EPG data search. It also contains extended schedule options and specific filter options for episodes or a series.

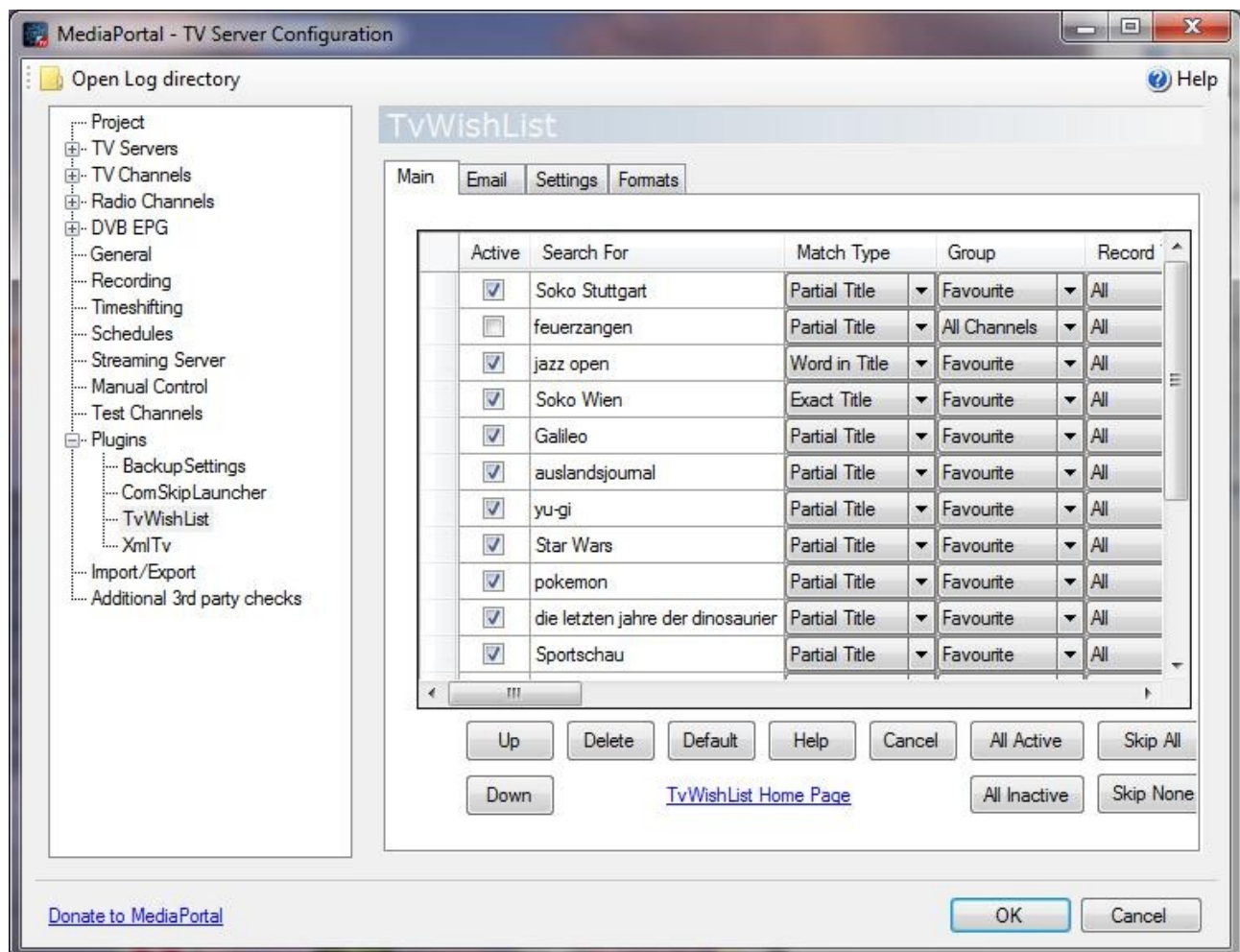
The „Setting“ tab contains the information about your email account if you want to send out an

email reminder.

Main

The „Main“ tab contains a list of all TV shows you want to record or get a reminder if they are found in the EPG data. You can scroll the list by the horizontal scroll bar to see the advanced settings. To edit an item you have to select it first and then edit the text box or pick the appropriate item from the combo box menu.

The single entries and the buttons are explained in detail:



Active

You can set an actual list entry active or inactive for the next EPG search. In the latter case it will be skipped for the search.

Search for

The program title must be typed into the first text box as it appears in your EPG data. The title is not case sensitive. The search options will be specified in the match type. You can use one single “&&” for defining two conditions as the match criteria of the partial title or text. E.g. “Bond&&007” will search for a title which contains both “Bond” and “007”. The search will be done for the title or

description depending on the match type.

Match Type

The match type can be „exact“, „partial“ or “word” if applied to a program title. If „exact“ is selected the program name in the EPG data must be exactly the same as the name specified in the „Search for“ textbox. In case of partial selection the EPG data must contain the specified phrase. Please note that for both options the Search for text is not case sensitive. This option is used only for the program title, but never for the program description, which always implies a „partial“ setting. For “Word in Title”, “Word in text” or “Word in Title/Text” the plugin assumes that a user has specified an exact word as a search criteria. This means the title/text must contain exactly this word with a space before and after the matched text. Alternatively the matched text can be at the beginning or end of the program title or description. If “expression” is chosen for match type the user can specify a SQL query in “Search For”. This enables great flexibility as the following examples are showing, but is only recommended for experienced users:

Example 1:

(title like '%James Bond%') AND ((description like '%007%') OR (description like '%geheimagent%'))

This will match James Bond in the program title only if at the same time either 007 or geheimagent is found in the text description of the program

Example 2:

(title like '%Star Wars%') AND (title not like '%clone wars%')

This will search for a partial title Star wars only if the title does not contain clone wars

Example 3:

(starrating = '***')

This will search for all programs rated with *** if your EPG data do include Starrating.

Besides title and description you can also use the following search criteria:

- titles
- description
- starttime
- endtime
- classification
- originalairdate
- episodename
- episodepart
- episodenum
- episodenum
- genres
- parentalrating
- starrating
- idchannel

Please note that sql expressions are not case sensitive.

The following operators are supported from SQL:

=	Equal
<>	Not equal
>	Greater than
<	Less than
>=	Greater than or equal
<=	Less than or equal
BETWEEN	Between an inclusive range
LIKE	Search for a pattern
NOT LIKE	Search for an excluding pattern
IN	If you know the exact value you want to return for at least one of the columns

The pattern must be enclosed by ' at the begin and at the end of the pattern expression. The following wild card characters are supported in SQL syntax:

%	A substitute for zero or more characters
_	A substitute for exactly one character
[charlist]	Any single character in charlist
[^charlist] or [!charlist]	Any single character not in charlist

Separated by
 you can specify a second search, which defines the search criteria for recordings. This expression will identify which recordings do belong to the actual Tv wish.

If you choose any other match type than expression, the recordings will be automatically assigned by the same search criteria as the schedules.

Group

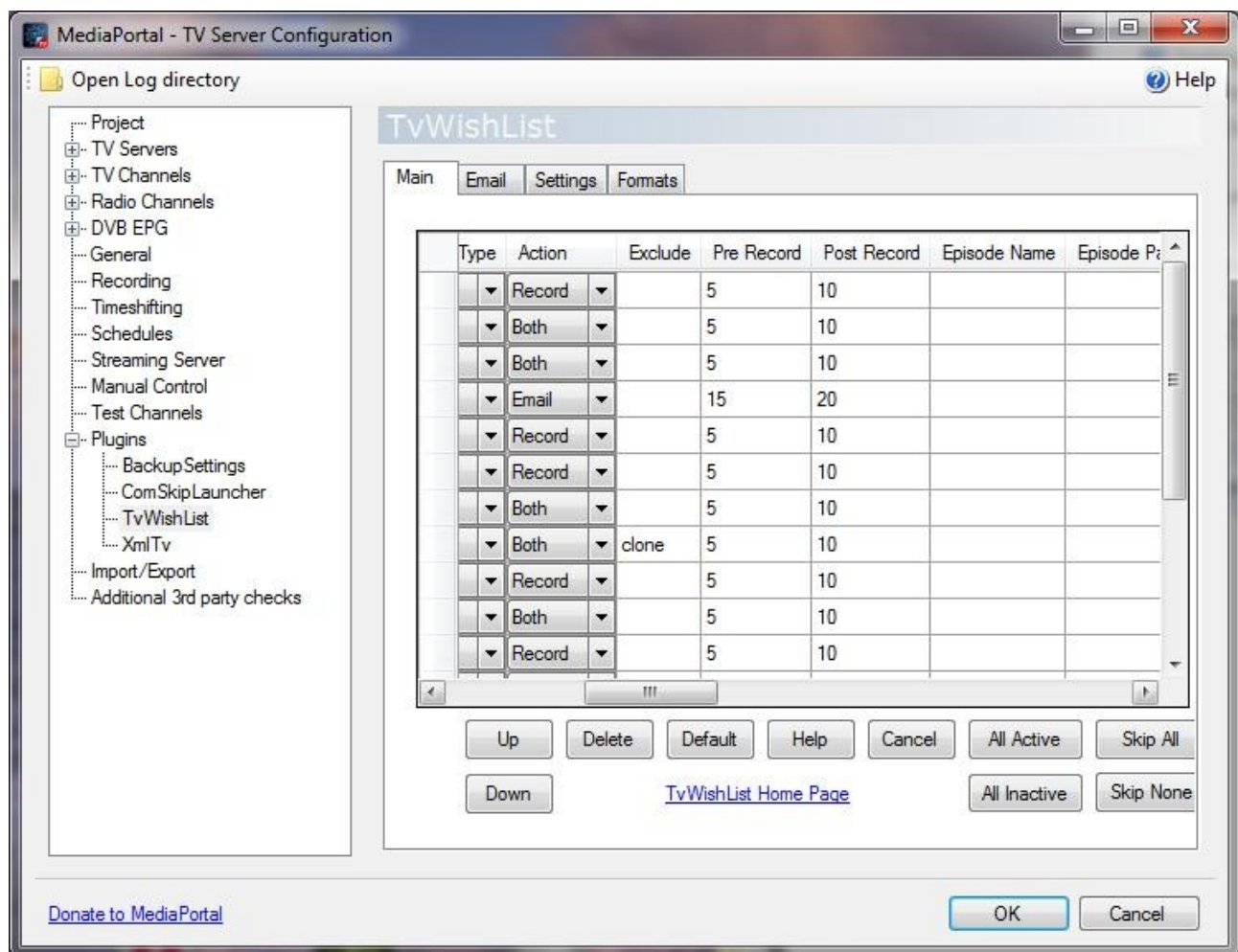
The group name is used to filter specific channels if they are defined in a Tv channel group or in a radio channel group. If you want to record only HDTV channels, you can specify here a group HDTV, which must contain then all your HDTV channels. The EPG data search will only be applied to the defined channels in this group. The default value is to search for all channels. In addition to groups it is also possible to specify a single channel name as explained later.

Record Type

The recording type can be specified if you want to record/find only one single movie („Only Once“) or all movies („All“) matching to the exact or partial title. If you select Only Once the search will be turned off after the first match. If „All“ movies are checked the record will always stay active and subsequent matches will be processed. If a movie is shown multiple times the plugin will only record the first instance. The program is searching your recordings and existing schedules and will ignore the data if an identical title and an identical description has been found. So this can be used for catching episodes, where identical episodes will be ignored if they have an identical description. Please note that overlapping schedules in time will not be recorded independent of the number of Tv cards you have. If you choose „All On Same Channel“ the plugin will lock after the first match on the found channel name and set to the channel filter to the matching channel name. Hence, subsequent searches will apply the channel filter and only recognize episodes on the same channel. If the channel filter has been manually set before it will not change. So the lock occurs only if the channel filter is set to „Any“. If you do not like the first found episode, you can manually change the channel filter later on. In a similar way the recordtype „All On Same Channel And Day“ will lock after the first match not only to the channel, but also set the filters „After Day“ and „Before Day“ to the same day, where the first match occurred. In the same way the other options will additionally lock to the Time filter „After Time“ and „Before Time“.

If you do not like the found lock you can search with the MediaPortal plugin in the View Only mode for all shows and then lock to your favourite time and day in the Email Mode by copying a single Tv Wish into the other mode.

Action



Here you can specify for a list item if you want to record the show or send out a reminding email or both if the movie is found in your EPG data. Please note that in addition to each line item the global check boxes must be enabled in your setting tab in addition.

Exclude

Here you can specify excluding filters. The entry Star Wars with the Exclude "Clone" will not record the title "Star Wars: Clone Wars". If the Exclude text is found in the title, the program will not be used. Please note that the Exclude filter will always be applied to the title. If you want to specify an excluding text applied against a description you will need to start with the character *. The Exclude *Clone will search in the description of a program for the word clone and ignore the program if found. If you start the Exclude phrase with ** before the text, the plugin will search both the title and the description for an excluding phrase. You can specify one OR condition by "|". E.g. the exclude criteria "bond|007" will exlude any title or description (depending on the match criteria) which contains the word bond or 007.

Pre Record

This will start the recordings x minutes before the EPG start time. The default value is taken from the "Recording" settings.

Post Record

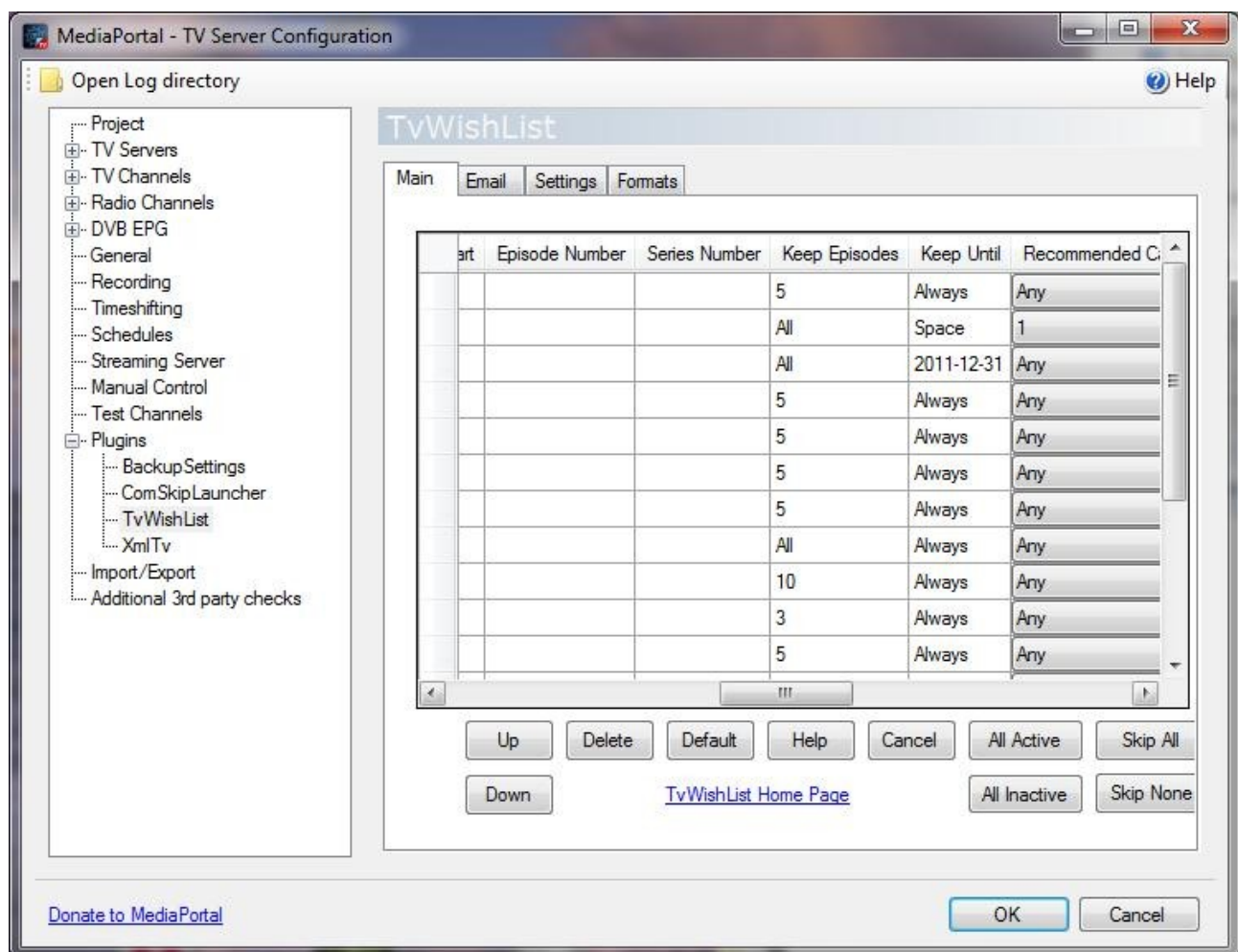
This will extend the recordings x minutes after the EPG stop time. The default value is taken from the "Recording" settings.

Episode Name

Here you can filter for a specific Episode Name. It must match the EPG data entry. This option is only valid for MP1.1 or greater. In older versions it will be ignored.

Episode Part

This is a filter option for a complete Episode part. It must match the EPG data entry. This option is only valid for MP1.1 or greater. In older versions it will be ignored.



Episode Number

This is a filter option for a specific Episode number. It must match the EPG data entry. This option is only valid for MP1.1 or greater. In older versions it will be ignored.

Series Number

This is a filter option for a specific Series number. It must match the EPG data entry.

Keep Episodes

This is an advanced scheduler option to keep only a maximum number of episodes on your drive. If the number is exceeded by a new recording the oldest episode will be deleted. This can only be used if you choose „Episodes“ in the „Use Folder“ option. The MediaPortal TvWishlistMP Plugin will automatically reset to „Any“ if an invalid configuration is chosen by the user.

Keep Until

This will specify how long you want to keep the recordings. After this date any found recordings will be deleted from the hard disk. The default entry "Always" corresponds to 31.12.900..

The following formats are supported:

Always:	Always
Until Space Needed:	Space
Until Watched:	Watched
Until Date:	yyy-mm-dd
Days after scheduling:	[x] days
Weeks after scheduling:	[x] weeks
Months after scheduling:	[x] months

Recommended Card

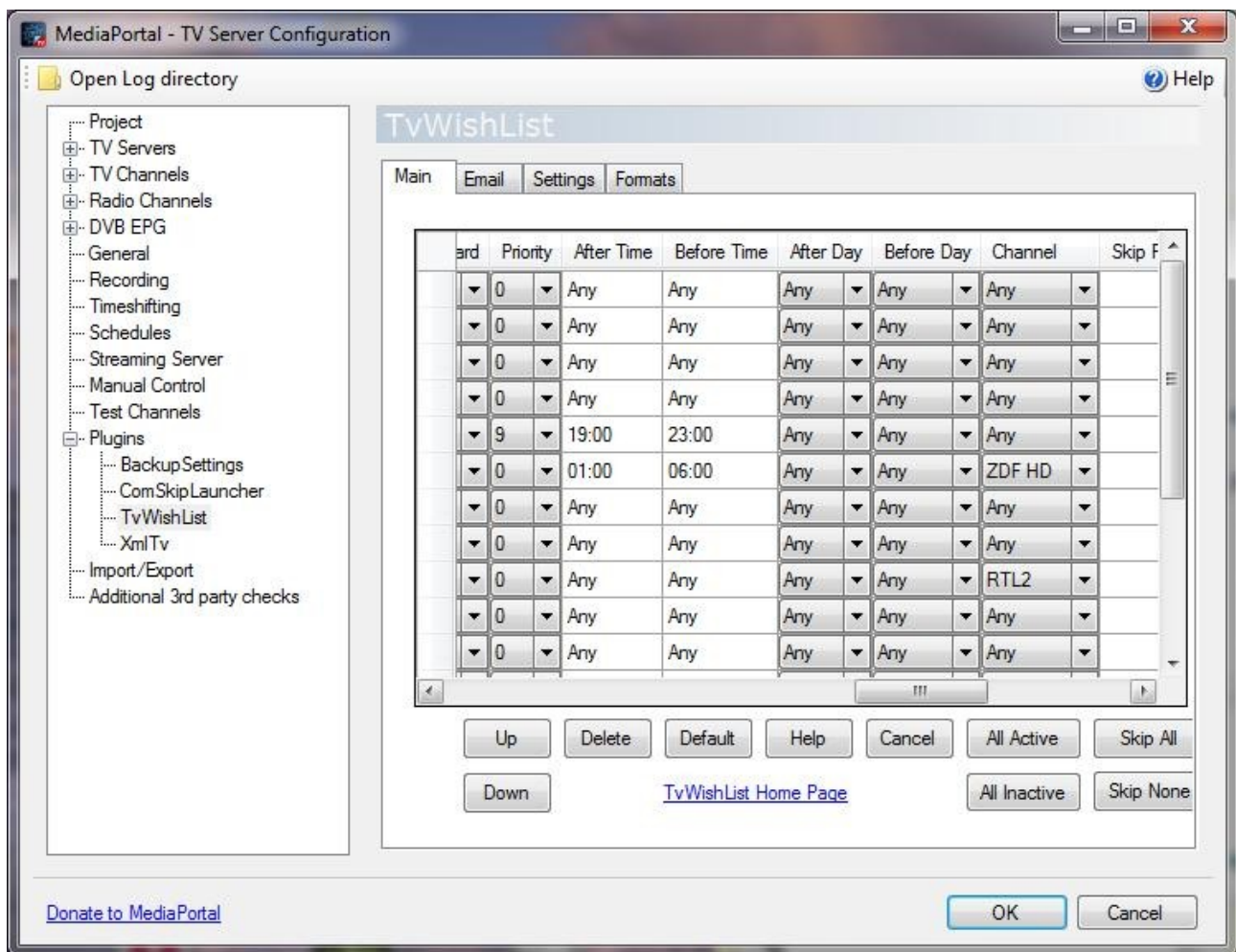
Here you can define a recommended card number for the recording. The default value is "Any".

Priority

This enables to specify a priority for scheduling. If the option "Schedule Conflicts" is set lower priority schedules in case of a conflict will be deleted. The default value is 0 (low priority).

After Time

Here you can specify a Time interval for recording only after a time in the format hh:mm . If you have specified valid times for after time and before time all matching schedules outside this time interval will be ignored and not recorded/emailed. The time interval refers for each day. If you need more than one time intervals, you can specify the same wish list entry twice with different intervals. Please note that the recorded start time must be after or equal the specified time. The default value is Any.



Before Time

Here you can specify a Time interval for recording only before a time in the format hh:mm . If you have specified valid times for after time and before time all matching schedules outside this time interval will be ignored and not recorded/emailed. The time interval refers for each day. Please note that the recorded start time must be before or equal the specified time. The default value is Any.

After Day

Here you can specify a Time interval for recording only after a day . If you have specified valid times for after day and before day all matching schedules outside this interval will be ignored and not recorded/emailed. The time interval refers for each day. If you need more than one day intervals, you can specify the same wish list entry twice with different intervals. Please note that the recorded start time must be after or equal the specified day. The default value is Any.

Before Day

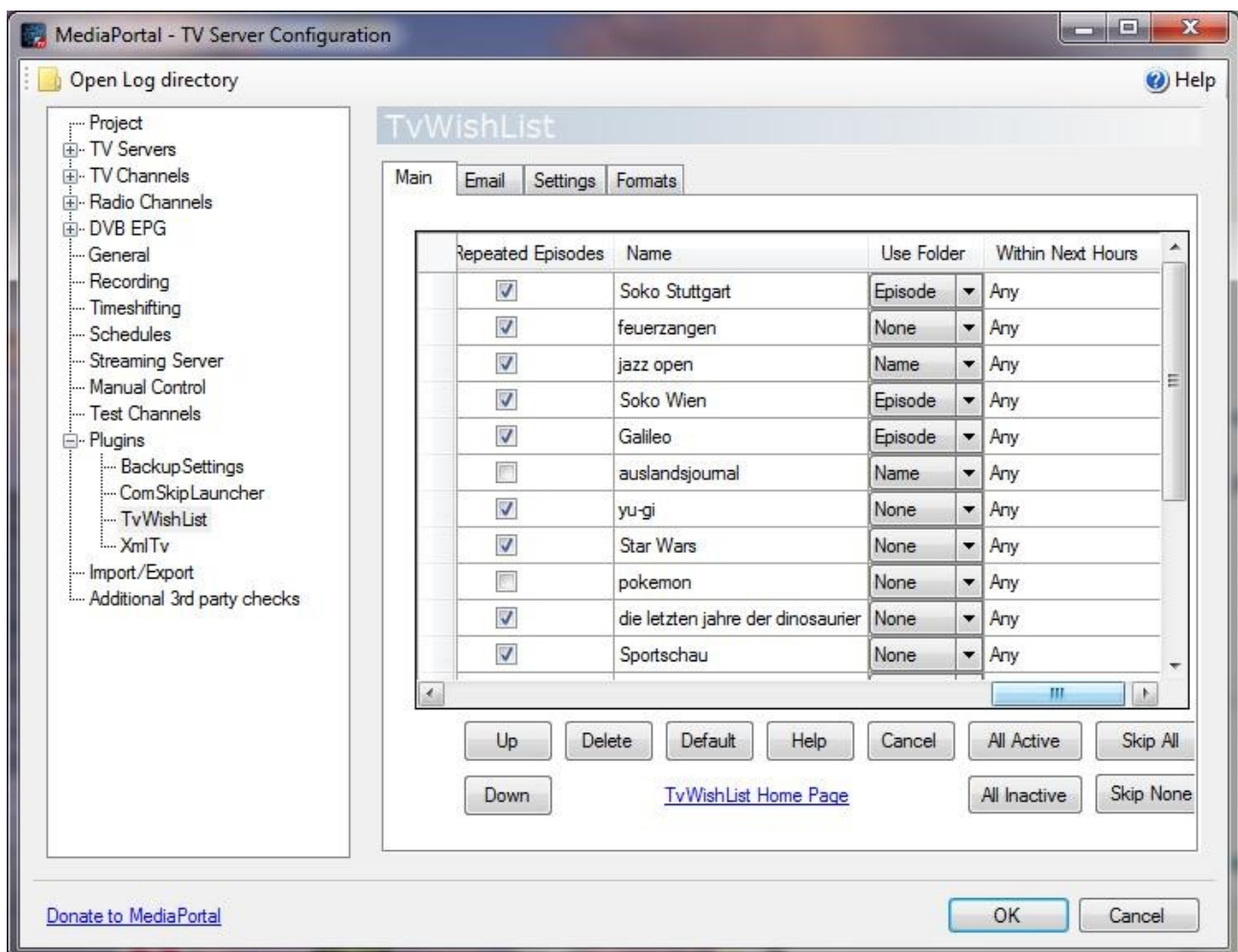
Here you can specify a Time interval for recording only after a day . If you have specified valid times for after day and before day all matching schedules outside this interval will be ignored and not recorded/emailed. The time interval refers for each day. If you need more than one day intervals, you can specify the same wish list entry twice with different intervals. Please note that the recorded end time must be before or equal the specified day. The default value is Any.

Channel

Here you can specify a specif channel name for matching schedules. All schedules from other channels will be ignored. Please in addition to this filter also group filters can be defined as explained before. The default value is Any. The available programs in the combo box are controlled by the channel filter group below. This enables to select only a small list of relevant channels in the menu. Selected channels from other rows will always be available in the menu.

Skip Repeated Episodes

"Skip Repeated Episodes" should be checked if you do not want to get identical episodes twice. The plugin will compare the criteria defined in the setting tab from the EPG data and skip the entry if the data are identical to any previously recorded data. The button Skip All or Skip None can be used to select all or none.



Name

Here you can specify a name for your Twish, which will be used by the MediaPortal plugin to display the single items. Especially when you have complex SQL queries in the „Search For“ item it is important to have a readable name for your Tv wish. Together with the next option this name is also used to store all found movies or episodes in a common folder. The name must not contain any forbidden window characters for filenames like [<>:?\.

Use Folder

If the user checks this option all found movies and episodes can be moved to a common folder after the recording. The name of the new folder is identical to the Episode EPG program name if „Episode“ is chosen (built in MediaPortal episode management). A folder defined by the name of the current TvWish is selected for „Name“ and no folder is used for „None“. Episodes and Name do only work if in the genral recordings you have set no folder for Movies and if you have set a folder for Series like in the default values.

Within Next Hours

This filter option is only useful for the TvWishListMP MediaPortal plugin in the view only mode. It enables the user to search only for movies or episodes which are starting within the next x hours from the time point, where the user is starting the EPG search.

Up

You can move the selected search entry up in the table whenever you click this button. The EPG search order is from top to down.

Down

You can move the selected search entry down in the table whenever you click this button.

Delete

The selected item in the list will be deleted

Default

This will load the default settings into the selected row

Help

This will open the manual

Cancel

This will load the last saved table configuration. All current changes will be undone.

All Active

This will set all entries to active

All InActive

This will set all entries to inactive

Skip All

This will check for all entries the check box Repeated Episodes

All InActive

This will uncheck for all entries the check box Repeated Episodes

TvWishList Home Page

This will open the forum entry in the default browser

Email

In the "Email" tab you can specify your email account information.

The screenshot shows the 'MediaPortal - TV Server Configuration' window. On the left is a tree view with categories like Project, TV Servers, TV Channels, Radio Channels, DVB EPG, General, Recording, Timeshifting, Schedules, Streaming Server, Manual Control, Test Channels, Plugins (with sub-items BackupSettings, ComSkipLauncher, TvWishList, XmlTv), Import/Export, and Additional 3rd party checks. The 'TvWishList' item under Plugins is selected. The main area is titled 'TvWishList' and has four tabs: Main, Email (selected), Settings, and Formats. The 'Email' tab contains several input fields: 'Account' with 'User Name' (sender@account.com) and 'Password' (masked with dots); 'Address' with 'Email Receiver:' (receiver@web.de) and a 'Test Send Mail' button; 'SMTP' with 'Provider' (Last Setting), 'Port' (587), 'SMTP Server' (smtp.googlemail.com), and a checked 'SSL' checkbox. There is also an 'Email Address' field with a note 'only if different than User Name'. At the bottom of the main area is a 'Search Now' button and the text 'Ready'. The bottom of the window has a 'Donate to MediaPortal' link, 'OK' and 'Cancel' buttons.

Account

In the account group you specify the login data for your email account which will be used to send the reminding emails. The data must contain your email account name and your password twice to avoid typing errors. If the username is different to your email address you must enter the email address in the field "Email Address" after the password. Otherwise this field can be left empty and will be automatically set to your email address.

Address

Here you specify the email address where you want to send a reminding email if a matching program has been found. Please note that an email is only been sent if the checkbox enable Email reply was enabled and the search list action includes email sending. It is very much recommended to send a test mail first to make sure the provider data and the email account data have been entered correctly.

SMTP

This group defines your provider settings for the SMTP email account. Check the providers textbox if your provider is already contained. If they are available you only need to click at your provider to display the smtp server name, the port number and if your provider supports SSL. If your provider is not listed you need to enter those settings manually. Check your provider's FAQ or help files for finding out these infos.

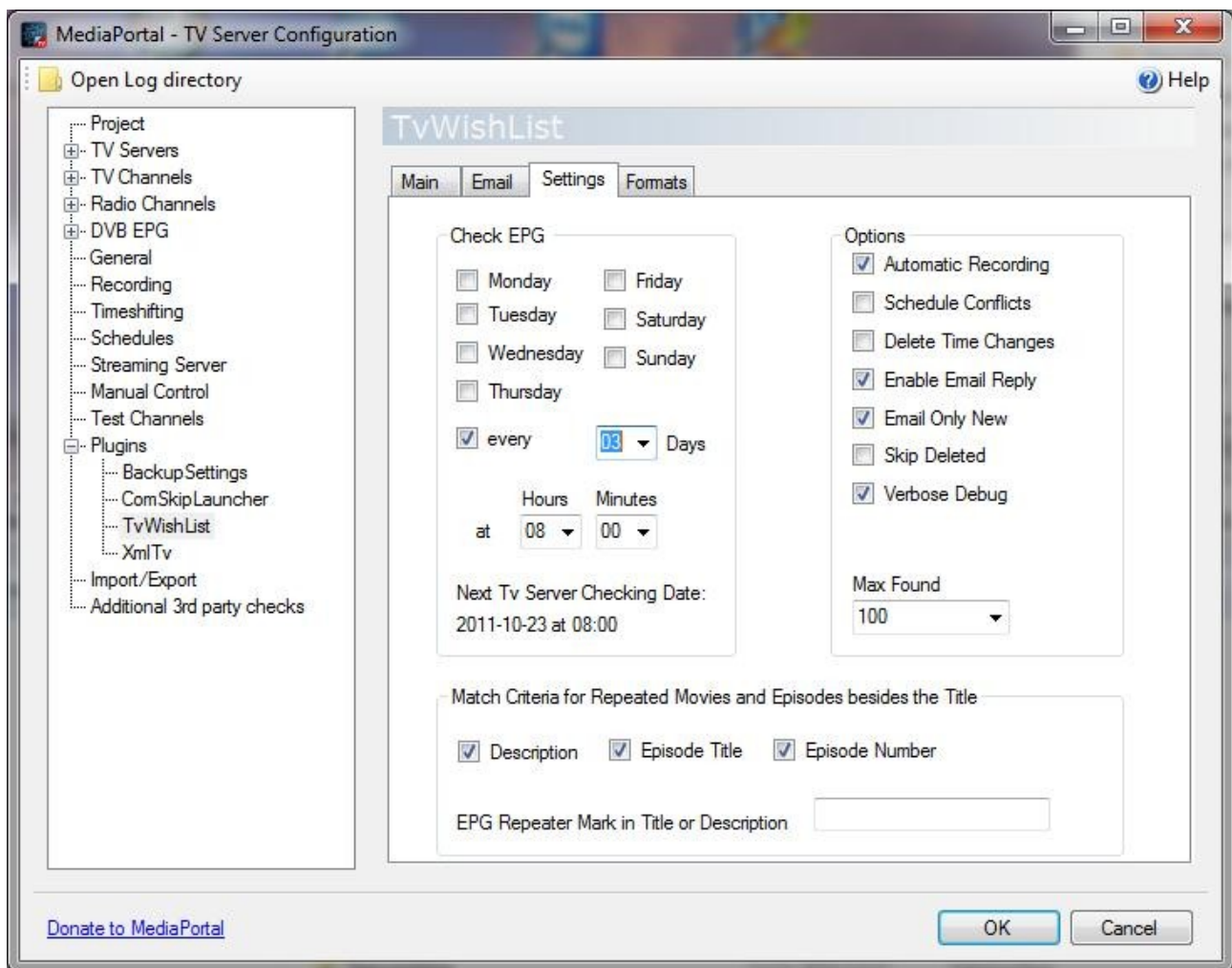
Test TvWishList

It is recommended to test the settings first by clicking this button. The plugin will now perform an immediate EPG search for your Tv wish list. The last line will show you the status and give information in case any errors occur. Please stay patient as this can take some time depending on your computer and your wish list.

Settings

Check EPG every

In this group you are defining how often your EPG data will be searched against your movie list and at what time this should happen. There are two possibilities to define it. You can specify specific days or check the every box to repeat the search every x days define in the text box. The second text box defines the hours and the third the minutes. In the example above the plugin will check every Monday, Wednesday and Friday the EPG data after 8:10 and compare them against your search list defined in the main section. The next Tv server checking date and time is shown below.



Options

The checkbox *"Automatic Recording"* must be enabled in order to automatically record any found programs. In addition the matching program must be specified for recording in the action column.

The checkbox *"Schedule Conflicts"* will add matching schedules to Tv server even if they are causing a conflict. If the checkbox is unchecked conflicting schedules found from the wish list will be ignored.

"Delete Time Changes" will try to change any schedules, which do not have valid EPG data. The plugin will search for a new EPG entry with the same title on the same channel. If it finds a new one the old schedule will be deleted and the new one added. This is needed if the EPG data are changing for a program. It avoids multiple schedules of the same program if the start or end time has slightly changed. If no alternative program is found in the EPG data the user will receive a warning email. The old schedule will not be deleted in that case.

The checkbox *„Enable Email Reply“* must be checked to send a reminding email if this is required in the action column of the matching program.

The checkbox *"Email Conflicts"* will send an email after each EPG checking if conflicts for the

schedules have been found.

The checkbox *"Email Only New"* will send an email after each EPG checking only if the data are new and have not been sent before.

"Verbose Debug" will switch on the verbose debug in the log file and should be used if you post any issues in the forum.

The number *"Max Found"* will limit the matching schedules. In case you enter an invalid search criteria matching to nearly all EPG data the damage will be limited by recording only the first "MaxFound" programs. This number will be used for all entries in the list view. In case you do not like this feature you can set "Max Found" to a very high number, e.g. 1000000.

Match Criteria for Repeated Movies and Episodes

As the EPG data of the users do vary depending on the source the plugin enables to specify the matching criteria for a recognized repeated movie or episode. For both movies and episodes the title must match. The user can specify if in addition the description, episode title and/or episode number must match to recognize an episode or movie as a repeating entry. Please note that the episode number is composed of the episode part and the episode number. Some EPG data do use markers for repeated entries in the title or description. E.g. "Star Wars (rpt.)" would indicate that the Star wars episode is repeated at a different time. In order to recognize this show by the plugin as repeated the user can specify a string for this marker. Please do not forget a space for the marker, as "Star Wars(rpt.)" is different to "Star Wars (rpt.)". Please check you EPG data to identify the marker string.

If the EPG data do not contain different data for different episodes, the user can uncheck "skip repeated episodes" in the main tab for the corresponding wish list entries.

The user can find out more details about the EPG data either by using the BackupSetting plugin and export the data (In the file ...\\TVUSER\\TVsettings.xml you can search for "<program") or by searching for a known episode with "verbose debug" checked and search the log file TvWishlist.log in the Tv server log folder for the details of the episode attributes.

Formats

If you do not like the default email format you can modify the format of the emails in this tab. New users should skip this schapter.

For the date time format the following parameters are supported:

{0:0000}	year
{1:00}	month
{2:00}	day
{3:00}	hour
{4:00}	minute
{5:00}	second
{6}	timeofday
{7}	date

This will generate for the format "{1:00}/{2:00} at {3:00}:{4:00}" the output "08/09 at 22:13".

For the email format the following parameters are supported:

```
{0} Title
{1} Description
{2} Channel
{3} Start
{4} End
{5} EpisodeName
{6} EpisodeNum
{7} EpisodeNumber
{8} EpisodePart
{9} Genre
{10} Classification
{11} OriginalAirDate
{12} ParentalRating
{13} SeriesNum
{14} StarRating
{15} Type
{16} Channel_id
{17} Created
{18} Searchstring
{19} Twish_id
{20} Recording_id
{21} Message
<br> New Line
```

The default format for an email consists of a line like

```
NEW ENTRY<br>{21}<br>Title={0}<br>Description={1}<br>Channel={2}
<br>Start={3}<br>End={4}<br>Type={15}<br>Created={17}<br><br><br>
```

This will generate an email like:

NEW ENTRY

TvWishList found program from Tv Wish [3]: Tatort

TvWishList did schedule the following program:

Title=Tatort

Description=Ein Politiker wurde entführt. Doch nach dem Erpresservideo lässt der Entführer nichts mehr von sich hören. Die Ermittler stehen vor dem Nichts.

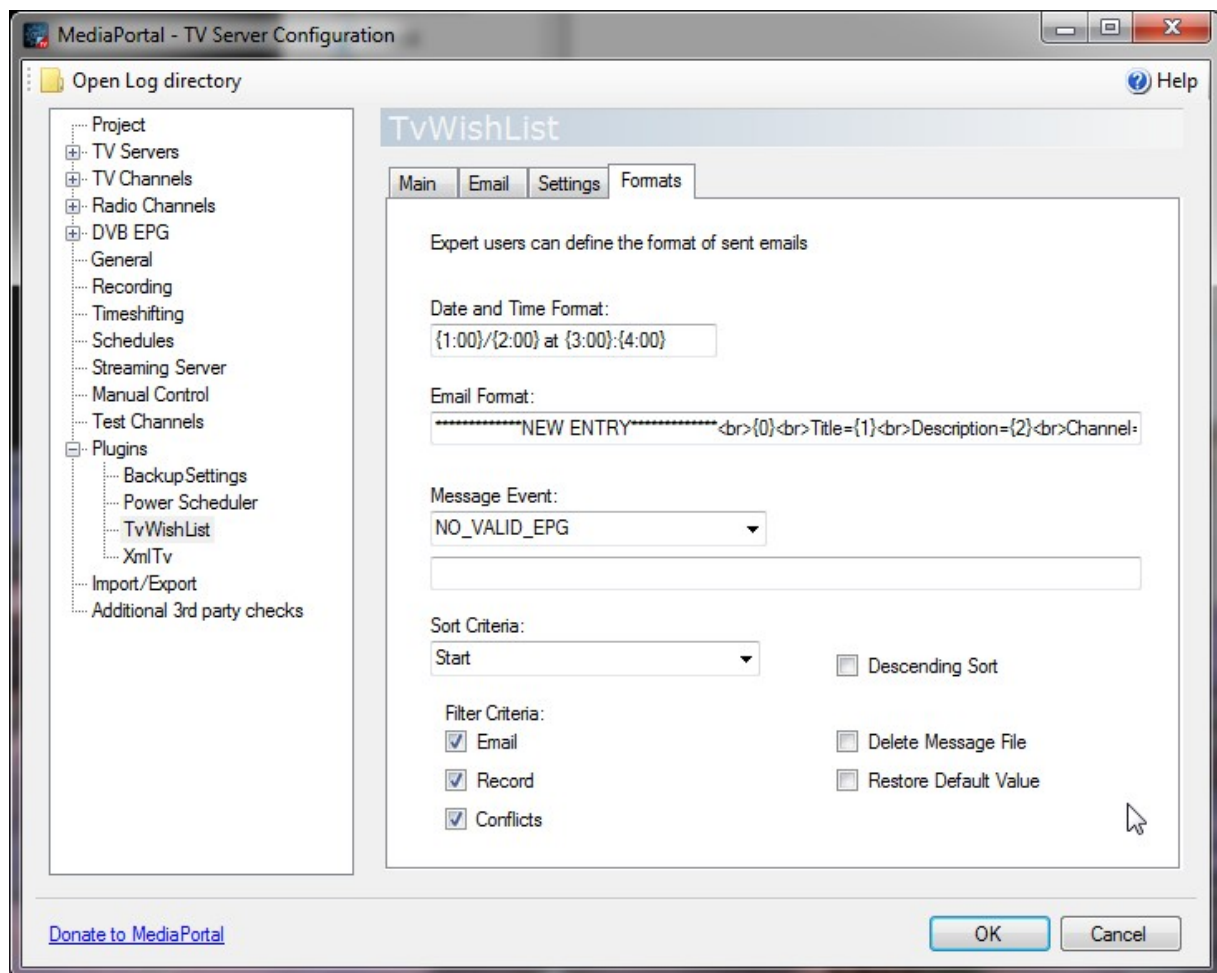
Channel=Das Erste HD

Start=08/14 at 20:15

End=08/14 at 21:45

Type=Both

Created=10.08.2011 08:39:29



In the second line you can specify “*Message Events*” used by TV server including error messages. This enables the users to define the email format and message format in their own language. In the message event line you cannot use parameters like for the Email format. It must be plain text only. If you leave the field empty the default message will be used.

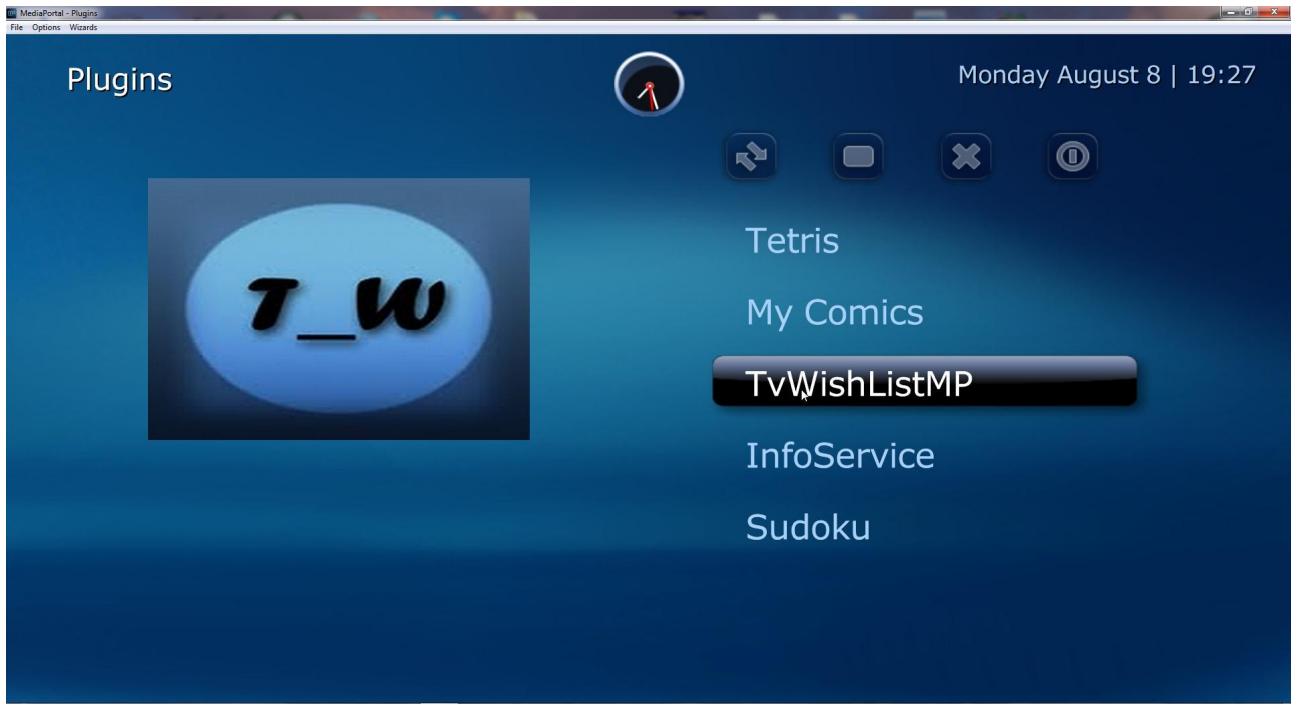
The combobox “*Sort Criteria*” lets the user choose the sorting criteria for the email messages. With the checkbox a descending sort order can be picked.

The “*Filter Criteria*” can be used to filter emails for the action type “Record”, “Email” and/or “Conflicts”.

“*Delete Message File*” will delete the message file and clear all history. This means that the user will receive emails again about found programs. This will also delete all „Deleted“ messages, so they cannot be anymore used for avoiding repeated programs which have been recorded and deleted.

“*Restore Default Values*” will restore the default values for the whole tab.

B) Detailed Usage Guide for the MediaPortal Plugin (TvWishListMP)



Configuration

Open the Mediaportal Configuration and enable the plugin in the windows plugin section. Then you can edit three tabs as explained below. When done “Save and Exit” your work or cancel to throw away your changes. The plugin is started depending on your MediaPortal configuration either in the Home section or in the Plugin section.

TV Server

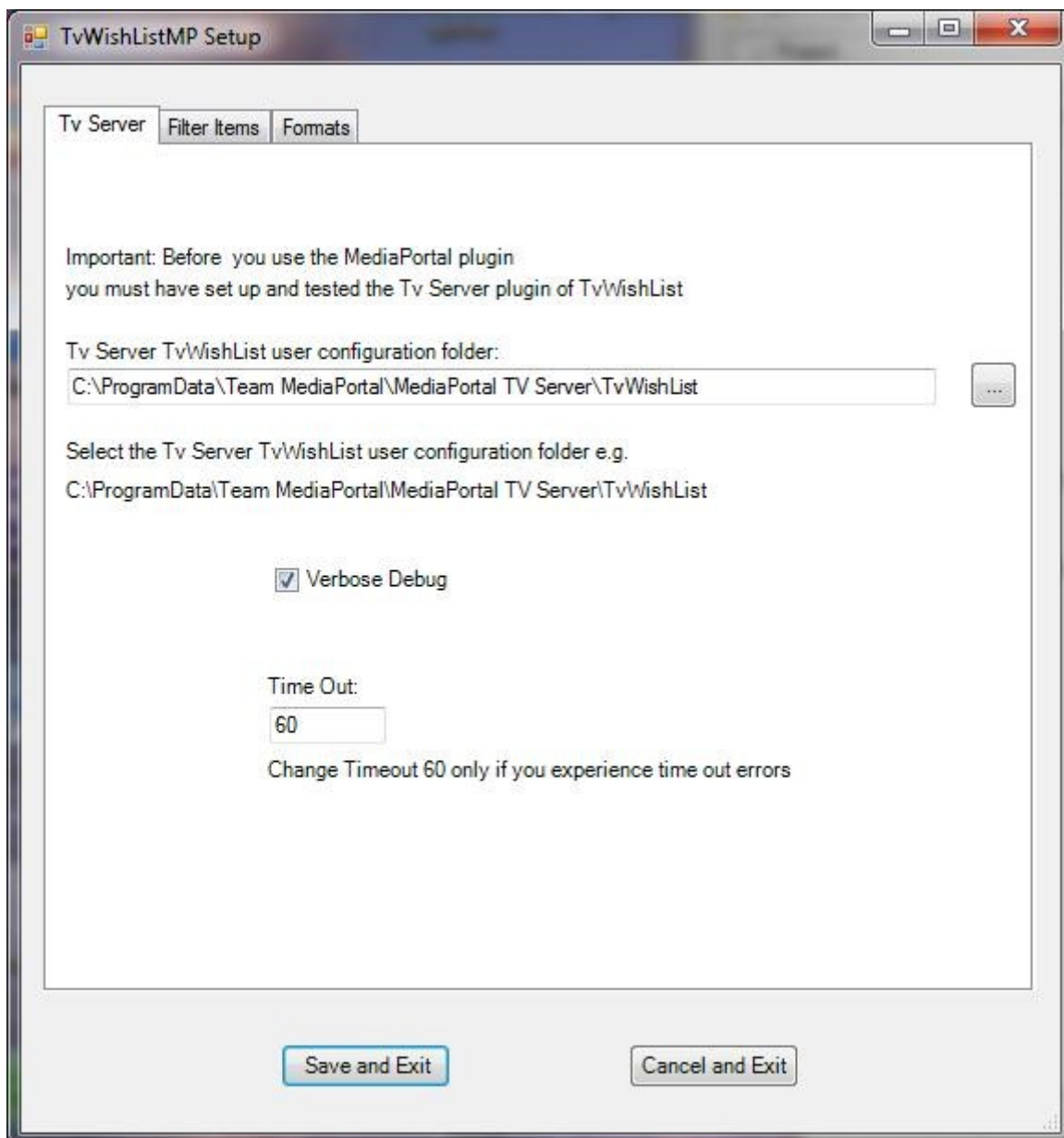
Under configuration you have to specify the TvWishList Folder on the Tvserver computer. Please ensure you have read and write access to this directory. This is the only mandatory configuration, all other are optional. Before you start the MediaPortal plugin your TvServer plugin must be configured first.

You can also disable here all Info windows, which pop up e.g. after saving or deleting.

With „Verbose Debug“ you turn on/off verbose logfiles for the plugin.

The „Time Out“ error value should only be changed if you are encountering timeout errors when starting an EPG search and the search does perform correctly when you start it from the Tv server setup configuration. It gives the time interval between changing messages in the status line. If a certain value is exceeded the plugin assumes an error did occur on the Tv server.

The following section is only for advanced users who want to customize the layout of the MediaPortal plugin. New users should jump to the next chapter “Main Window”.

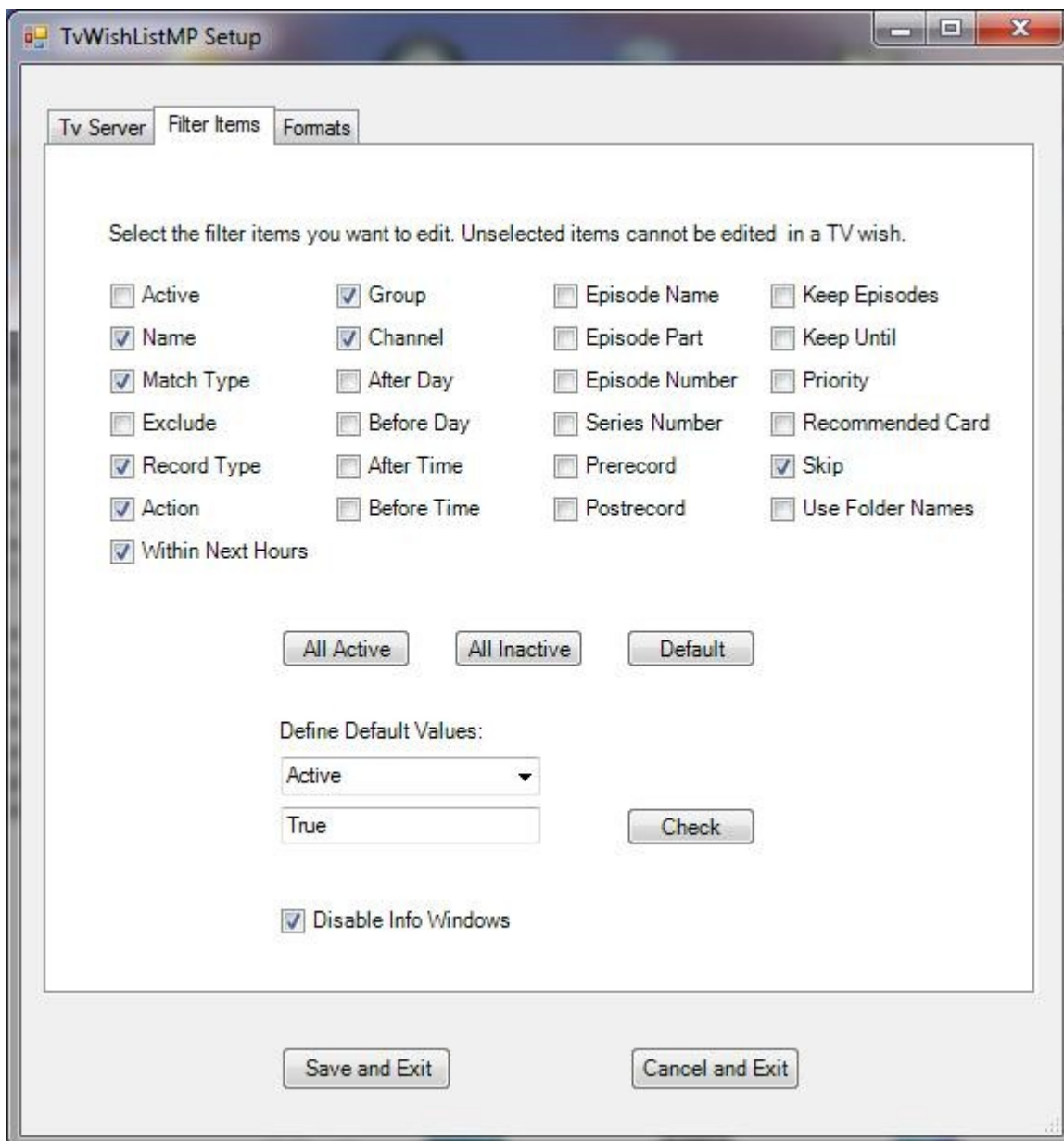


Filter

Filter Items

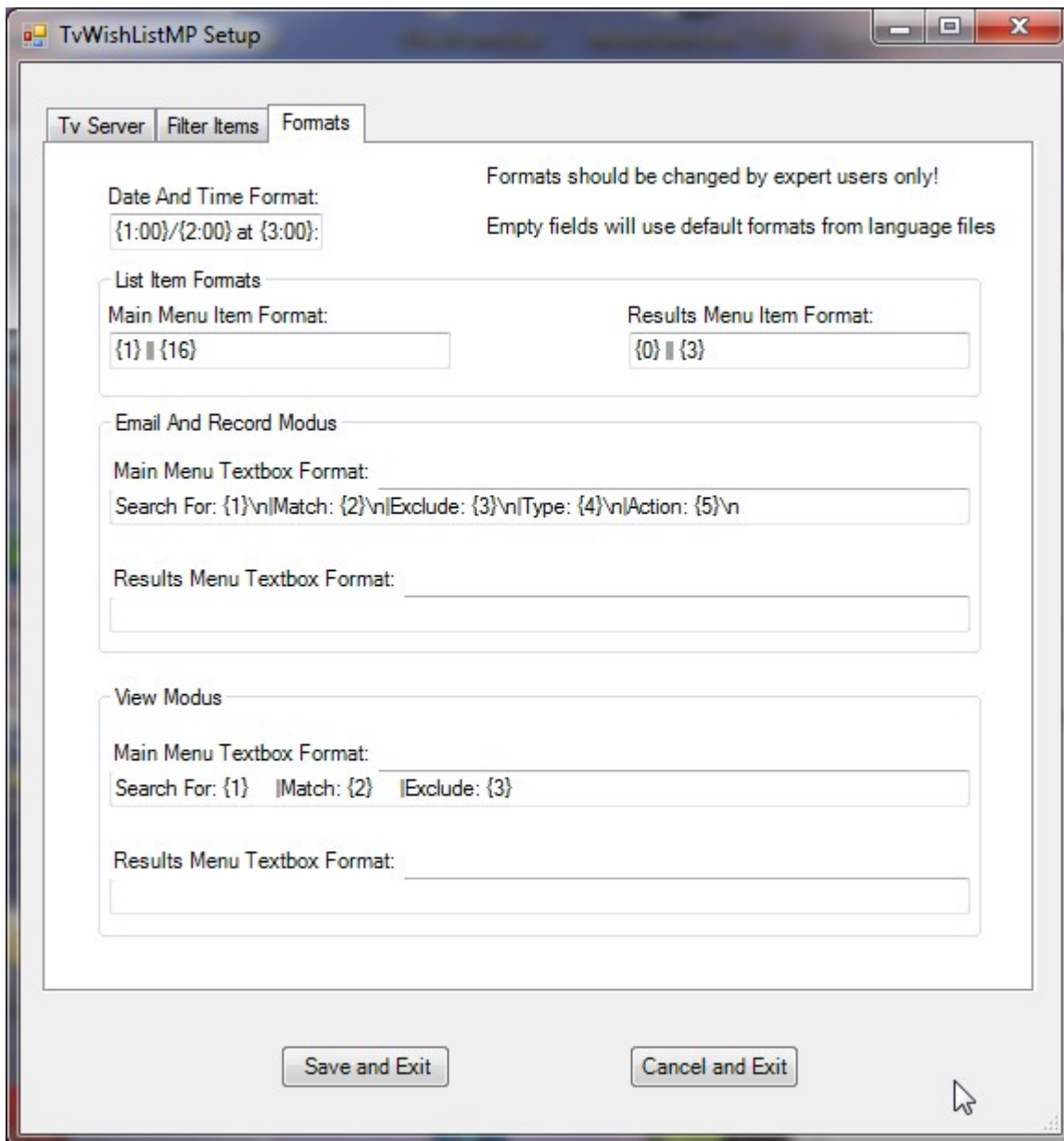
In this section you can select the items which will be displayed on the Edit window. Note that "Search For" has to be always selected. The user can disable filter options which he is not interested in. The button "All Active" will enable all items, the button "None Active" will disable all. The button "Default" will restore the default filter item selection and the default configuration for the TV wish default values.

The TV wish default values can be modified in the combo box "Define Default Values". In the example on the picture I have defined a default Group "Favourite" instead of the hard coded "All Channels". Whenever a new TV wish is created the group "Favourite" will now be used by default. If the user clicks on "Default" or enters an incorrect format, the hard coded default values will be used. With the "Check" button the user can test if a correct format has been entered.



Formats

The Format tab should only be used by expert users. If you screw up here everything has to be emptied to use the default values defined in the language files.



The *Date And Time Format* can be specified by using the following parameters

- {0:00} year
- {1:00} month
- {2:00} day
- {3:00} hour
- {4:00} minute
- {5:00} second
- {6} timeofday
- {7} date

The format string “{1:00}/{2:00} at {3:00}:{4:00}” will generate an output like “08/13 at 10:27” for a date time value of August 13th at 10 hours and 27 minutes.

The **Main Menu** supports the following parameters in a format string:

- {0} active
- {1} searchfor
- {2} matchtype
- {3} group

{4} recordtype
 {5} action
 {6} exclude
 {7} viewed counter
 {8} prerecord
 {9} postrecord
 {10} episodename
 {11} episodepart
 {12} episodenummer
 {13} seriesnumber
 {14} keepepisodes
 {15} keepuntil
 {16} recommendedcard
 {17} priority
 {18} aftertime
 {19} beforetime
 {20} afterdays
 {21} beforedays
 {22} channel
 {23} skip
 {24} name
 {25} useNameFolders
 {26} within next hours
 {27} scheduled counter
 {28} tvwshid
 {29} recorded counter
 {30} deleted counter
 {31} emailed counter
 {32} conflicts counter

 new line
 | item selector for not displaying user disabled items

The *Main Menu Item Format* of “{1} ||{16}” will display in the item list on the left site the “Search For” phrase and on the right side the number of found hits. Please note that “||” is only allowed for list item formats to select the text on the left side and on the right side of a list item.

The *Main Menu Textbox Format* is used to display the TV wish details of a selected item in the main menu. A format string of “Search for my favourite: {1}\
|Matching: {2}
|But Exclude: {3}” will generate the following out put for a selected Tvwish SearchFor=Star Wars with the attributes match=Exact Title and Exclude=Clone Wars whenever you focus on the Star Wars Tv wish.

Search for my favourite: Star Wars
 Matching: Exact Title
 But Exclude: Clone Wars

In the same way this concept can be followed for the other entries. Different formats can be specified for the “Email And Record Mode” and the “View only Mode”. Please note that in the “View only Mode” all recording related items are disabled.

If you use the selection identifier “|” within your format, then the part between two adjacent “|” is only displayed if the user has the selected the corresponding item in the filter item tab.

The **Results Menu** supports the following parameters:

- {0} Title
- {1} Description
- {2} Channel
- {3} Start
- {4} End
- {5} EpisodeName
- {6} EpisodeNum
- {7} EpisodeNumber
- {8} EpisodePart
- {9} Genre
- {10} Classification
- {11} OriginalAirDate
- {12} ParentalRating
- {13} SeriesNum
- {14} StarRating
- {15} Type
- {16} Channel_id
- {17} Created
- {18} Searchstring
- {19} Tvwish_id
- {20} Recording_id
- {21} Message
-
 new line

The format string in the “Results Menu” describes the details of a found movie or episode like title, description, channel, ... for each focused item in the list.

Different formats can be defined for the “Email And Record Mode” and the “View Only Mode”.

Users can define their own format for the items by defining the *Results Menu Item Format*.

Main Window

Please note that the following descriptions refer to a default user installation without having customized the sections.

The main screen is divided into three parts: The left section contains the menu buttons, the middle section the TvWishList and the right section the detailed description of a TvWish.

The TvWishlist shows the title and the numbers of found entries on the right side. The numbers are the schedule count and the count of already recorded movies. In addition the message box at the right show will display two more counters, the number of emails for a single tv wish and the number of deleted recordings. Each item can be moved up or down or deleted by clicking at the symbols at the right side of each item. If you select an item you will be transferred to the edit window. If you doubleclick on an item with the right mouse button or use the play command on your remote you will be transferred to the View Results window and will see all the messages which belong to the single Tv wish.



The plugin does handle two different TvWishlist data:

In the „Email and Record Mode“ the list is identical to the Tvserver TvWishList data list and users can choose the action „Record“, „Email“ or „Both“. In this mode the Tvserver plugin will search the EPG data based on a regular timing interval, which is defined in the Tv Server plugin configuration. The MediaPortal can now be used to input those data, define the filters and view the results.

In The „View Only Mode“ a separate list of TvWish data has to be defined, which is only handled by the MediaPortal plugin. It can be used as a personal Tv guide for a one time search of programs by defined filter criteria. In contrast to the Email And Record Mode the search is not repeated again by the Tv Server plugin. You can switch via the first button between those modes. In this mode the recording options are disabled in the edit window.

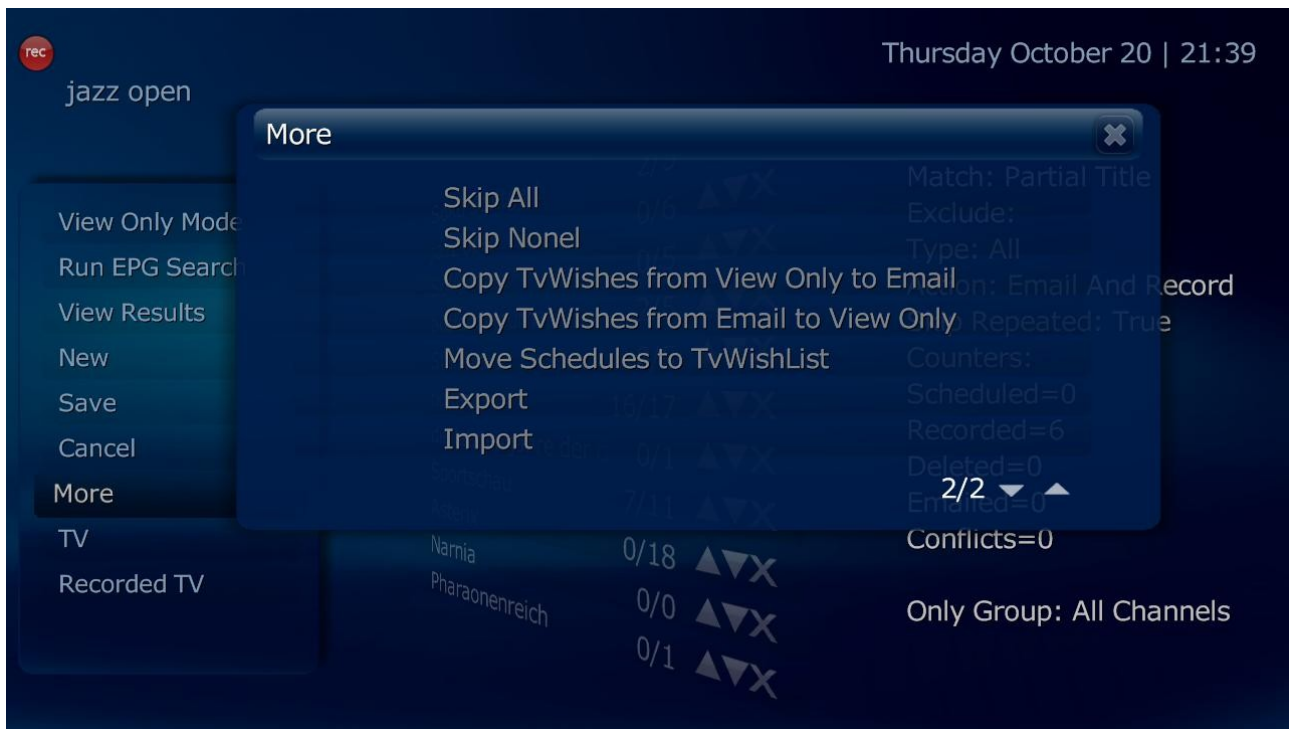
The button „Run Epg Search“ will trigger for both modes a new manual search on the TvServer and then show the hits in the item list. During the search the status of the TvServer plugin will be shown at the bottom.

The button „View Results“ will bring you to the View results Window and display the found program.

The button „New“ will allow you to do a quick add of a new entry by just entering the „search for“ title. The default data will be used as a filter criteria.

The button „Save“ will store all results to the TvDatabase. Please note that the plugin is not doing any data checking if multiple client users or the Tvserver plugin is changing the TvWish data. The data will be automatically saved before running a new EPG search or when exiting the plugin via the main page.

The button „Cancel“ will reload the last data and undo all your edit work before your last save.



The button „More“ will start an extended menu list allowing the user globally to activate or deactivate all TvWish items, enable or disable for all data the „skip“ filter or reset the hits for all entries. The button *Copy TvWishes from View Only to Email* will copy all your TV wishes from the “View Only Mode” to the “Email And Record Mode”. Only new TV wishes will be copied. In a similar way the button *Copy TvWishes from Email to View Only* will copy new TV wishes from the “Email And Recording Mode” list to the “View Only Mode” list. The button *Move Schedules to TvWishList* will move your scheduled movies and episodes to TvWishlist and delete the recordings. This allows you to select movies in the EPG program MediaPortal screen and then move all your schedules to TvWishList for editing special filter functions. As the schedules are deleted you must run “Run EPG Search” right after editing your filter options in the “Email And Record Modus” to make sure that you do not miss one of your schedules. The button *Export* will create a .txt file of your Tv wishes and an xml file for your messages. The file is always stored in the Tv server TvWishList folder e.g. C:\ProgramData\Team MediaPortal\MediaPortal TV server\TvWishList\TvWishes.txt. If an older file exists it will be renamed with a date/time stamp. The *Import* button will import your Tv wishes and messages from this .txt file into the plugin. The following names are used for import and export:

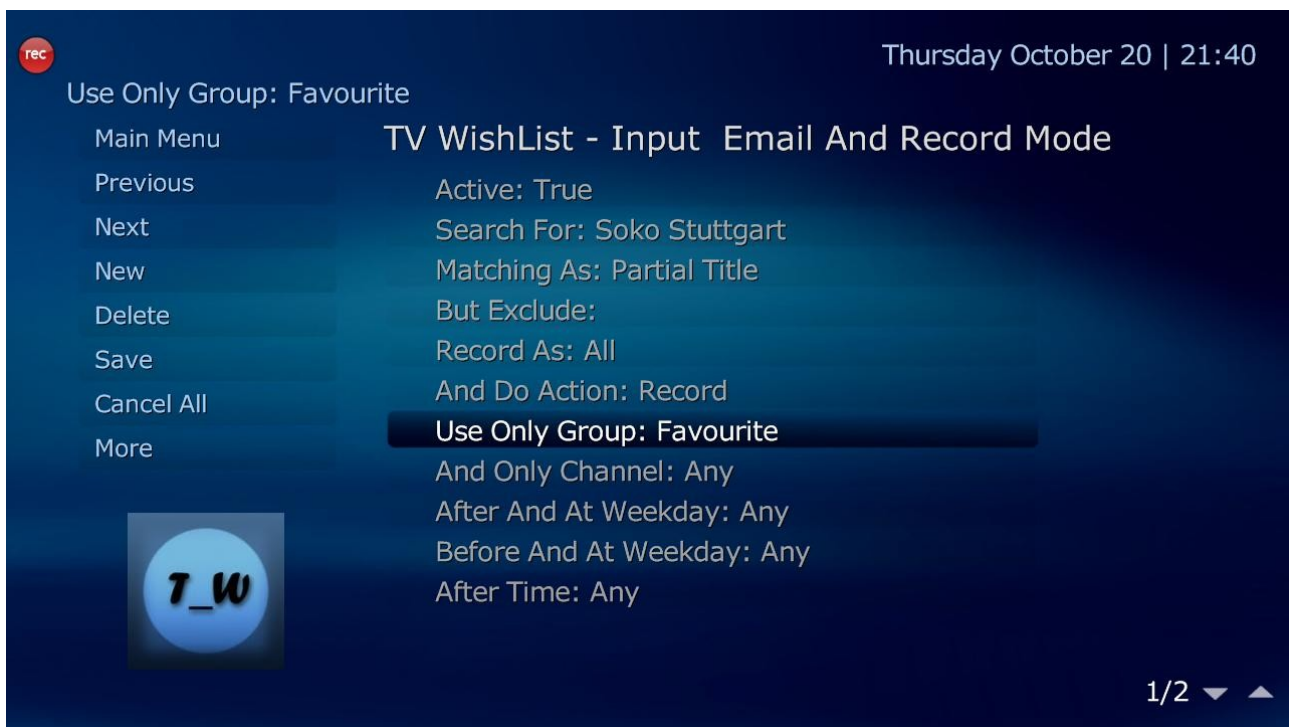
Tvwishes.txt	Tv wishes in Email mode
Messages.xml	Messages in Email Mode
TvwishesViewOnly.txt	Tv wishes in View mode
ViewOnlyMessages.xml	Messages in View mode

The button „TV“ will bring you to the TV main screen and the button „Recordings“ to the Recording screen.



Input Window

In the input window you can click and edit each filter property for a single Tv Wish. The meaning of those items are identical to the ones described in the TV server plugin section under „Main“.



The button „Main Menu“ will bring you back to the main page of the plugin. The button „Previous“ will bring up the previous Tv wish, the button „Next“ the next Tv wish. The button „New“ is identical to the main menu and will add a new wish. With „Delete“ you can delete a Tv wish like in the main window. The buttons „Save“ and „Cancel All“ do work as described for the main menu.

Please note that those buttons do apply not only to the single Tv wish, but to all wishes being modified after the last save action.

The button *More* will open an advanced menu. The toggle button *All Items* will display all edit items independent of the user selection in the MediaPortal configuration. With *User Defined Items* you can switch back to the original configuration. This allows the user to temporarily enable all edit items for a Tv wish and then switch back to the default configuration.

With *View Single Result* you can see on the view window the found movies and episodes for only this selected Tv wish. The button *Copy to Other Mode* will copy the actual Tv Wish you are editing into the other mode. If you are in the email mode it will be copied into the View Only mode. If you are in the View Only mode it will be copied into the Email mode. Copying only occurs if the Tv Wish does not exist already, so no data are being overwritten.



Found Results Window

On this window you can view the results of your last EPG search. It is listing all messages, which did match to your specified search criteria. The line items show the title and the start date, while the text box on the right side shows the details of the found message. The messages can be separated into the following types:

„*Scheduled*“ Each scheduled program will create a message type scheduled. By clicking an item you can delete the schedule.

„*Recorded*“ After recording the message will be changed to recorded and will show the file path. By clicking the message you can delete the recording.

„*Deleted*“ If the recorded file is not found or the recording has been deleted the message of a recording will be changed to deleted. By clicking on a item you can delete the message.

„*Emailed*“ After an email has been sent to you with a movie an email type message is created. By clicking on the message you can delete or schedule the program.

„*Conflicts*“ After a conflict for scheduling a program has been identified, a message with the

conflicting program will be created. By clicking on the item you can delete the message.

Viewed“ In the view only mode only viewed messages can be generated. By clicking on an item you can delete the message.

Please note that you can use the filter and sort functions to display the informations you want.

The „Main Menu“ button will bring you back to the main menu of the plugin.

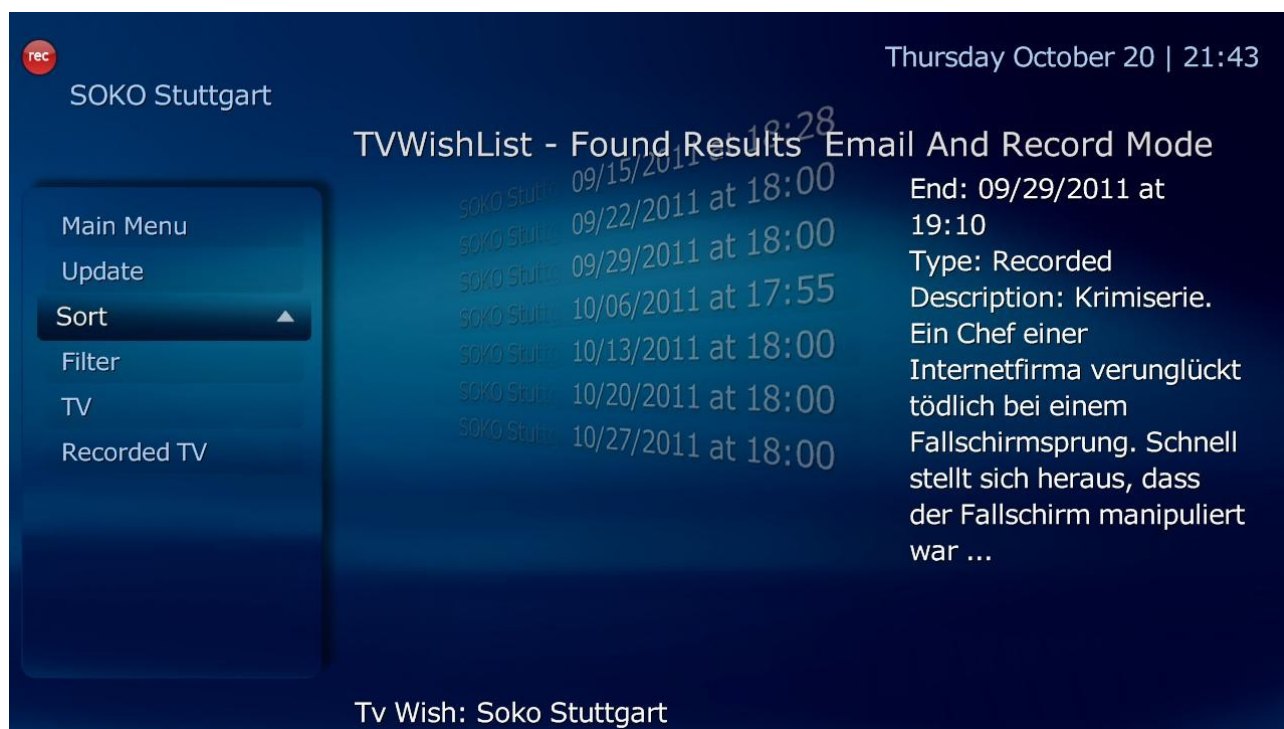
The „Update“ button will refresh the window based on the criteria of the sort and filter button.

The „Sort“ button enables the user to apply user defined sort criteria of the list like title, start date, created,

The „Filter“ button enables the user to apply user defined filter actions like display only programs which have been recorded or for which an email has been sent. If your „View Results“ list is empty check first the filter menu to make sure you have enabled the right items. Try to select all if you are not sure.

The button „TV“ will bring you like in the main menu to the TV window, the button „Recorded TV“ to the Recorded window.

If you click on an item you can *Schedule or Delete* the movie even in the View Only mode or go back to the *TV* main screen.



Language files

If you are a new user you can skip this section.

If the plugin is not supported in your language please copy the file C:\ProgramData\Team MediaPortal\MediaPortal\language\TvWishListMP\strings_en.xml and translate it into your language. Please do not translate any English comments. A typical string line looks like
<String id="1100">View Only Mode</String>

where 1100 is the string number and „ View Only Mode“ the value which you have to translate. The format strings have to be defined for 4:3 skins and 16:9 screens as shown in the existing language files. The formats are being explained in the configuration section.

Do not forget to post the file so that I can include it into the next version.

Please do not shorten or exclude specific format items, as the users should do that in their configuration. The language file should provide a complete format description for all items.

The following languages are supported during install:

- English by huha
- German by huha

Skins

If you are a new user you can skip this section.

The following skind are supported with the installer:

- Default by huha
- DefaultWide by huha
- Blue3 by huha
- Blue3wide by huha
- PureVisionHD by huha
- Streamed MP by diskeeper

If you plan to design your own skin, the skin architecture consists of three windows:

It is recommended to include a TvWishList button on the Tv main screen jumping to the main menu.

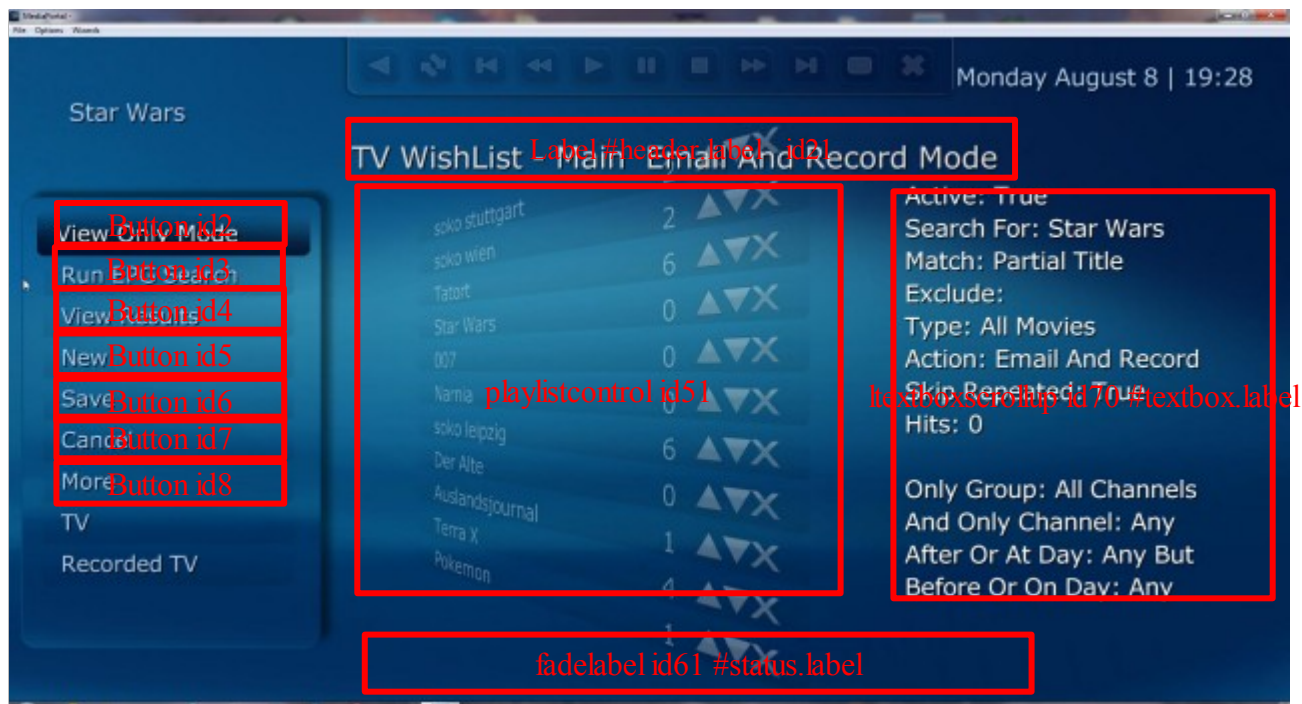
- Main menu: TvWishListMP.xml WindowID:70943675
- Edit menu: TvWishListMP_3.xml WindowID:70943677
- View menu: TvWishListMP_2.xml WindowID:70943676

The following controls have been used by the plugin:

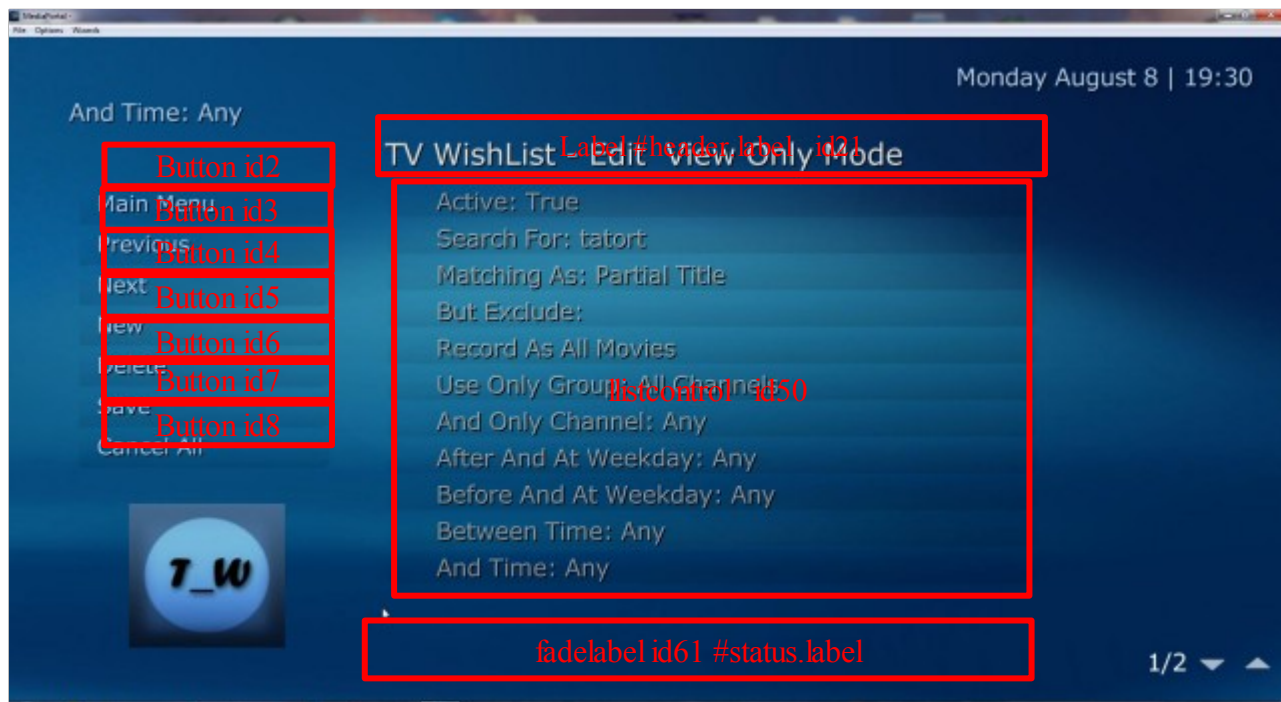
- Main menu:
 - label id21 #header.label
 - textboxscrollup id70 #textbox.label
 - fadelabel id61 #status.label
 - playlistcontrol id51
 - buttons id2-8
- View menu:
 - label id21 #header.label
 - textboxscrollup id70 #textbox.label
 - fadelabel id61 #status.label
 - listcontrol id50
 - buttons id2-5
- Edit menu:
 - label id21 #header.label
 - fadelabel id61 #status.label
 - listcontrol id50

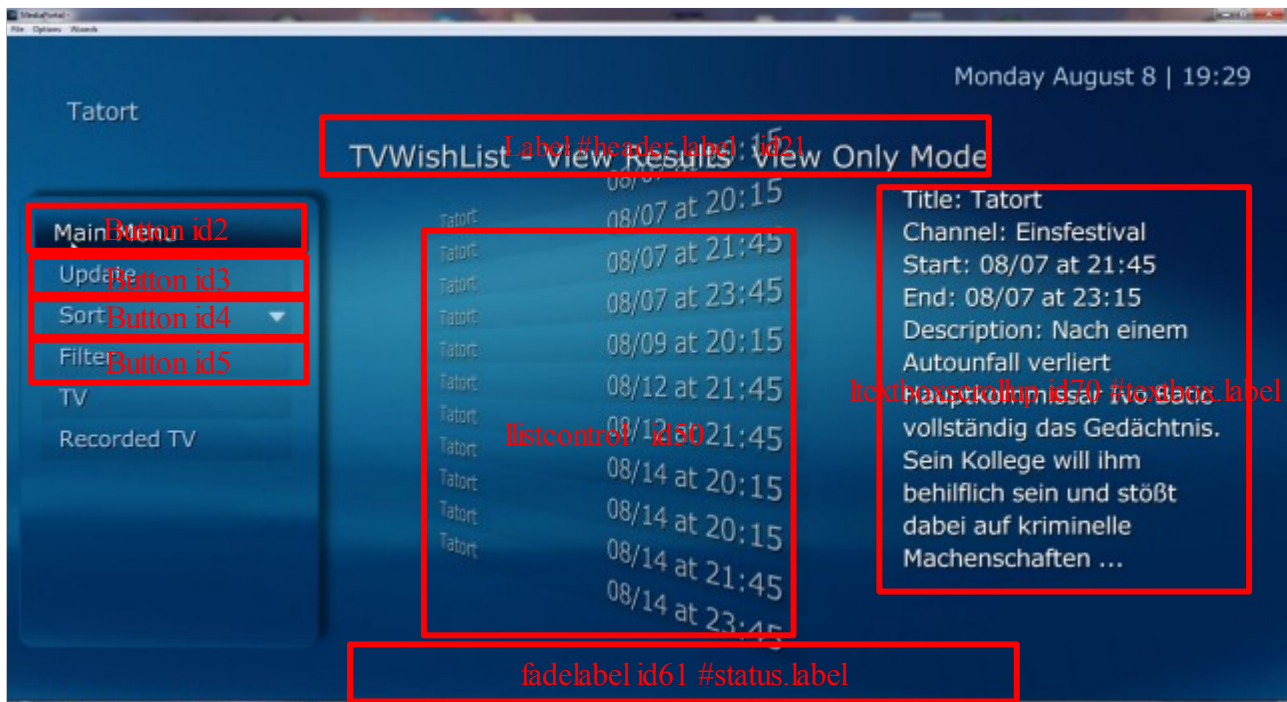
- buttons id2-8

Main menu: TvWishListMP.xml WindowID:70943675



Edit menu: TvWishListMP_3.xml WindowID:70943677





Acknowledgements

I would like to thank Johannes for the design of the new TvWishList icon, DieBagger for the source code of his GuiControlsDemo plugin and all testers for finding bugs and helping to improve the plugin in the forum.

FAQ and Tips

1. Preferred recording on a specific channel group

If you are preferring a specific channel group for your recordings (e.g. a group HDTV with HD channels or a group no_advertisement) for your favourite movies, you can specify the tv wish twice. Make sure the first entry contains your favourite channel group and the second entry contains "All Channels" as a group. In that case recordings will be done first for your HDTV group and if not found they will be searched on "All Channels" in the second entries. There will be no doubled recordings, because the plugin will not do a second recording of a title and description which has been scheduled already.

Change Log

Version 1.2.1.3

- bug fix: day could not be selected in MP plugin if language was set to German
- bug fix: after saving TvWish defaults were displayed in English even if language was set to German
- bug fix: deleting a TvWish from the edit window did not work
- bug fix: when renaming to name folder after a recording the changed path in recordings has not been saved - need to rerun tvdatabase import in setup tv
- bug fix: emailed schedules are not getting deleted after scheduled time was reached

- bug fix: during recording movies, messages must not be created due to capitol letters in title and description. This did create duplicate messages
- bug fix: name folders: special situation could occur where renaming was tried during recording
- bug fix: name folder from Tv wish list name was not shown in recordings
- bugfix: xml file must not be updated after moving file to names folder
- changed translation name for name folder to tv wishlist name
- filter all added on view window
- filter none added on view window
- include in recorded message the file size after the file path

Version 1.2.1.1

- severe bug in logging with verbose debug on for Tvserver
- play command (p) instead of right mouse button double click can be used for users with a remote to view the results of a single wish
- file checking in recordings did not work
- usability improvements on edit and main window (last edit item in edit list stays after editing)

Version 1.2.1.0

- fixed bug in copy schedules to TvWishList (now only allowed in email mode)
- major code structure changes for better maintenance (MP+TV)
- switched default values for useFolder to None
- bugfix in mpei installer StreamedMP (set skin files to copy if older)
- keepuntil allows to specify day, months or years ,until space needed, until watched until date
- separate counters for scheduled, recorded, deleted, emailed, viewed, conflicts
- warning if switching to default values in MP
- deleted recordings from tvwishlist can be used as a skip criteria if checked in the Tvserver settings
- separate log files TvWishList.log in the MediaPortal or Tvserver log folder
- save on exit
- updated language files with counter - playlistitem shows now (scheduled/recorded) and date shows year
- updated filters for recorded, deleted
- moved messages.xml to tvserver database to avoid data integrity issue incase of user error
- save filter properties in MP config file
- DEBUG value in log file and MP plugin, added verbose debug in mp configuration
- check and correct user default formats with hardcoded values if necessary
- delete schedule/message from view results window
- plugin can be entered only via main window
- bug fix on Episodenummer and Seriesnumber filter
- bugfix in view only mode - there must not be "is already scheduled"
- view results for a single tvwish by double clicking with the right mouse button on the item

Version 1.2.0.17

- MediaPortal/TvServer Plugin:
- many bug fixes - too many to list
- new mode for Recordtype and Use Folder
- streamed Mp skin from diskeeper included into installer

Version 1.2.0.14

- MediaPortal Plugin:
- Fixed initialization bug for remote control and keyboard

- old results are now automatically removed

Version 1.2.0.13

- Tvserver Plugin:
- new columns „Name“, „Use Name Folder“ and „Within Next Hours“
- bug fixes
- MediaPortal Plugin:
- „Export“/„Import“ in main menu on „More“
- Select „All Items“ / „Userdefined Items“ on edit window on „More“
- View found hits of a single Tv wish
- many many bug fixes
- select on the view result window a show for quick scheduling or going to the TV screen

Version 1.2.0.12 RC

- release of the TvWishListMP beta version plugin
- Tvserver plugin enables user defined Email formats

Version 1.2.0.10

- fixed installer bug "license file not found"
- fixed severe bug causing exception during EPG data scan

Version 1.2.0.8

- added new user options for improved recognition of repeated episodes
- plugin compatibility check for future 1.2 included
- added new .dll version for 1.2
- updated structures for compatibility to 1.2
- bugfix on email only for repeated runs from mcl
- bugfix on found counter from mcl
- uninstall deletes now messages.xml
- bugfixes on conditional version compile options

Version 1.2.0.6

- fixed bug in search function
- added expression for SQL queries
- no more support for MediaPortal version 1.0.0. final
- fixed bug for email messages (new message system)

Version 1.2.0.2

- fixed bug on filter functions "before/after day" and "before /after time"
- output of program description
- reset all founds will reset all found counters to 0

Version 1.2.0.1

- fixed bug on "skip none" button
- channel column is now a combobox based on the group setting in channel filters

Version 1.2.0.0

- fixed bug on wish count limit of 35 to 40. Now you should be able to specify above 10000 tv wishes
- moved global skip repeated episodes to the main table. It can now be specified for each wish.

Version 1.1.1.0

- delete scheduled recordings if mismatch with found program, because old and new epg data

- do not match
- exact word match for title or text
- filter option "after time" and "before time" (default any)
- filter option "after day" and "before day" (default any)
- filter option for a single channel name (default any)
- small GUI layout changes
- moved important messages from DEBUG to INFO

Version 1.0.7.0

- faster EPG data search by presorting EPG data. Prersorting takes about 30s on a Intel 1.78GHz dual core, but the time could roughly be reduced by half for each specified wish (about 15s). if you have many wishes defined you will benefit a lot from this feature.
- user option for skip reoeated schedules (see manual). Users with poor EPG data description can now disable this feature to record all episodes
- EPG checking time can be specified by week days
- improved handling of next EPG checking time (handshake between Tvservice and SetupTV)
- old EPG checking date will be restored if user is shutting down or suspending/hibernating the computer during an active EPG search of the TvService
- correct handling of integer values which are not in the drop down list in all textboxes (hours, days, minutes, max found)
- Buttons added for setting all entries active / inactive

Version 0.0.0.7

- supporting MP1.1RC2

Version 0.0.0.6

- dummy release to fix the MPEI2 issues, there are no functional code changes

Version 0.0.0.5

- fixed issue for some users with exception message during scan of EPG data
- fixed bug with advanced option "Keep Until"
- added hours and minutes for defining a time to check the EPG data

Version 0.0.0.4

- added advanced settings and additional filter options for episode and series
- fixed bug with invalid (empty) first row in table
- modified installer for install/uninstall argument in order to prepare for the new MPEI2 installer
- added new GUI for direct list editing

Version 0.0.0.3

- fixed conflict management by including the Tv server conflict management
- added user settings for Schedule Conflicts and Email Conflicts
- added back episodes (one or all) and recordings will be flagged as episodes and recorded in a folder. This allows to use episode management later from the recordings.

Version 0.0.0.2

- added exclude filter

- episodes or movies will be recorded only once
Version 0.0.0.1
- initial version

Known Problems / Troubleshooting

- check the forum thread link for an actual list of issues

Author(s) of Plugin

1. huha

Acknowledgement

1. I have reused part of the code from EmailScheduler and the conflict management from Tv server
2. I want to thank all the folks working on this project resulting in the best Media Center I have ever seen.
3. Special thanks to all users who posted their comments and helped me to improve the plugin

License

```
/*
 * Copyright (C) 2005-2011 Team MediaPortal
 * http://www.team-mediaportal.com
 *
 * This Program is free software; you can redistribute it and/or modify
 * it under the terms of the GNU General Public License as published by
 * the Free Software Foundation; either version 2, or (at your option)
 * any later version.
 *
 * This Program is distributed in the hope that it will be useful,
 * but WITHOUT ANY WARRANTY; without even the implied warranty of
 * MERCHANTABILITY or FITNESS FOR A PARTICULAR PURPOSE. See the
 * GNU General Public License for more details.
 *
 * You should have received a copy of the GNU General Public License
 * along with GNU Make; see the file COPYING. If not, write to
 * the Free Software Foundation, 675 Mass Ave, Cambridge, MA 02139, USA.
 * http://www.gnu.org/copyleft/gpl.html
```